

ELC *focus*

July 2, 2025



Attention VPK & SR Providers!
Please read the **NEW** and updated information below regarding VPK and SR program providers! For general questions regarding this information, please contact our Provider Relations Department at (941) 757-2900 ext. 2300.

[Learn More](#)

Preparing for a New School Year
Make starting a new school year special by celebrating even the small milestones, learn about VPK 2025-2026 registration, how to nurture your child's interests in learning and creativity, and ways to keep safe from the summer heat in the July issue of Parents' Pages!

[Learn More](#)



Parents' Pages

The Official Newsletter of the Division of Early Learning

JULY 2025
VOLUME 11
ISSUE 7



Provider Update Meetings



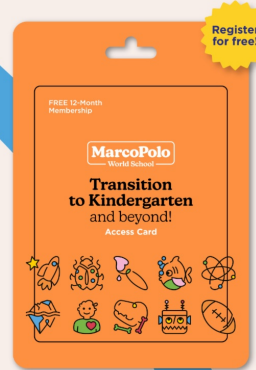
July Provider Update Meeting
Join us in person or virtually on **July 8th at 1:00 pm** for an opportunity to connect with our Provider Relations Team to discuss the top DCF violations and Health and Safety Inspections, share ideas and insights, and stay informed on updates that support your work with children and families.

[Learn More](#)

MarcoPolo T2K Access Cards

Please submit your tracking sheets, and remind families that they can now begin using their MarcoPolo Access Cards. The MarcoPolo T2K Access cards give families FREE access to valuable tools and engaging activities to help their children build skills for a confident start to kindergarten.

[Learn More](#)



Transition to Kindergarten and beyond!

Families can begin using their Access Cards!



PROFESSIONAL DEVELOPMENT SURVEY

We Want to Hear From You!

Providers, the ELC would love to get your feedback to help us develop training and support that meets your needs and interests as a child care professional. Your voice matters, so please take the time to complete our short Professional Development Survey through the link below.

[Learn More](#)

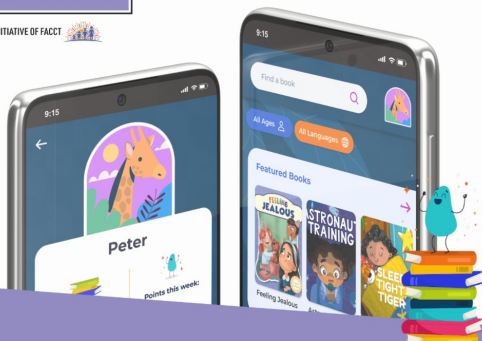
Enroll Your Center Today!

The ELC is offering some exciting NEW initiatives for providers designed to help promote quality teacher-child interactions and improve children's language, literacy, social-emotional development, kindergarten readiness, and brain growth.

[Learn More](#)

LENA GROW™ FRAME THEIR LEARNING with STEAM
Science • Technology • Engineering • Arts • Mathematics





BookSmart Summer Bingo

Attention summer learning programs! Get ready to turn story time into a winning adventure with the **BookSmart Summer Bingo Game**. Over the next **8 weeks**, read **24 books** on the **BookSmart app**, complete and submit your **Bingo Card** by **July 25th**, and your program could **WIN** up to **\$500** in books from **Gardner Media!**

[Learn More](#)

Pre-Apprenticeship Program Classes begin in August!

Do you enjoy working with kids? The ELC's Early Education Pre-Apprentice Program offered through MTC can help launch your career in early childhood education! All costs are covered by the ELC, and job placement is available upon completion.

[Learn More](#)



Early Childhood Pre-Apprenticeship Program

Launch your career in early education — at no cost!



FREE
Tuition



15 Week
Program



Leave
Career-Ready



UPCOMING TRAININGS

TUESDAY
JULY 15

July Tuesday Tune-Up Session

Do you have questions about challenging behavior and early childhood development? **RSVP in advance** to join us via Zoom for an open forum to connect with our Child Development Team. [Learn More](#)

SATURDAY
JULY 19

Nemours Reading BrightStart! Level One Training

Learn more about the Nemours Complete Program for Early Literacy Success, and proven instructional strategies for teaching oral language, writing, alphabet awareness, and comprehension. [Learn More](#)

TUESDAY
JULY 22

CLASS: Early Language Support in Infant Classrooms

RSVP in advance to join the conversation with our CLASS Specialists Team and learn how simple, everyday interactions can boost infants' brain development and communication skills. [Learn More](#)

TUESDAY
JULY 29

Sleep Baby Safely

Learn how you can help prevent infant deaths from unsafe sleep environments. Review Manatee County data and key safety tips, and discuss real-life scenarios to help you support your co-workers and families. [Register](#)

JULY
2025

Handle With Care Training (Open Dates)

'Handle with Care' is an initiative aimed at helping children succeed in school by alerting school staff with a simple notice when a student experiences a traumatic event involving law enforcement or Child Protection Services (CPS).

[Register](#)

**AUGUST
2025**

MarcoPolo for Educators Training

Learn more about the MarcoPolo for Educators Program and how it aligns with CLASS and STAR to enhance classroom quality and strengthen family engagement. [Learn More](#)



Early Learning Coalition of Manatee County, Inc. | 600 8th Avenue West Suite 100 |
Palmetto, FL 34221 US

[Unsubscribe](#) | [Update Profile](#) | [Constant Contact Data Notice](#)



Try email marketing for free today!



CHANGES TO SCHOOL READINESS COPAYMENTS FOR FAMILIES

Attention School Readiness (SR) Providers,

Starting July 1, 2025, the federal government requires changes to SR copayments. At eligibility determination or redetermination, early learning coalitions (ELCs) will assess households **one** copayment and assign that copayment to only **one** child. The household copayment will be a percentage of family income and based on authorized hours of care (full or part-time).

Following determination or redetermination or adding a new child or enrollment, families will pay their copayments to the **one** provider for their **one** child per household with the assigned copayment. If that child has siblings within the same household that the same provider cares for, those children will **not** have a copayment.

For children with a copayment, the ELC will reimburse you the SR reimbursement rate based on the child's care level and authorized schedule minus the copayment. For children without a copayment, the ELC will reimburse you the SR reimbursement rate **in full** based on the children's care levels and authorized schedules. If needed, you may continue to assess additional fees for the SR children for whom you provide care.

Read your children's certificates to find the copayment amount. If a child's certificate shows a \$0.00 copayment, there is no copayment to collect for that child.

If you have questions about these copayment changes, contact our Provider Relations Team at (941) 757-2900 ext. 2300 or email providerrelations@elc-manatee.org.

VPK PERFORMANCE METRIC

The Florida Department of Education calculates the performance metric and assigns designations within 45 days of the program's end.

Program Quality: This component assesses the overall quality of the VPK program, likely including factors like classroom environment, teacher qualifications, and curriculum.

Student Achievement: This component measures student performance on standardized assessments, likely focusing on kindergarten readiness and other developmental milestones.

Learning Gains: This component assesses the progress students make during the VPK program, often measured through initial and final progress monitoring results.

MARCOPOLO T2K ACCESS CARDS REMINDER

1. If you haven't already and have received Transition to Kindergarten and beyond Access Cards, please submit your MarcoPolo distribution tracking sheets to rspivey@elc-manatee.org.
2. Please remind families that they can now start using their MarcoPolo Access Cards. Feel free to use the wording below to help you spread the word.

The MarcoPolo Transition to Kindergarten program helps reduce summer learning loss for your child. The program has started, and your child can get started on reinforcing lessons surrounding letters, numbers, and social & emotional development!

What is Transition to Kindergarten and Beyond?

- A digital program in the MarcoPolo World School app offered for FREE to you and your child during this summer and through the upcoming school year
- You will be emailed activity packs and tips on how to support your child's learning at home.
- What do I do with the Access Card? - Go to www.MarcoPoloWorldSchool.com/readyforschool to enter the access code on the back of your card

Thank you for the incredible work you do to support young learners. We are grateful for your continued partnership in helping children and families make a smooth and successful transition to kindergarten.

ELC PROVIDER SURVEY

The ELC's Provider Relations Team would love your feedback! Please check your email for a survey shared in mid-July regarding SR & VPK Monitoring.

UPCOMING ATTENDANCE TRAINING

The Provider Relations Team will begin hosting an Attendance Training via Zoom this August! Please keep an eye out for an email with additional information on how to attend.